



Installation Instructions

Easy Install Billet Grille (Part # 838023)
2005-On Toyota Tacoma

NOTE: Carefully read entire instructions thoroughly before attempting to install this part.

NOTE: During shipping product might loose its convex shape or the bars may bend slightly. In order to get a proper fit, product might need to be re-shaped slightly by bending it BY HAND to regain its convex shape. Be careful not to damage the Billet Grille when bending

INCLUDED COMPONENTS

- 1 – Billet Grille
- 4 – M4 x 50mm Phillips Screws
- 4 – M4 Lock Nuts
- 4 – 25mm “J” Hook Brackets

TOOLS REQUIRED

- Phillips Screw Driver
- 4mm Wrench

INSTALLATION INSTRUCTIONS

1. Inspect product and check components with items listed above.
2. **Optional:** Using factory instructions, remove the entire front grille shell (as pictured in all figures).
3. Cover the top, vertical, and lower horizontal bars with masking tape to protect the finish.
4. Carefully position Billet Grille onto grille shell cavity (Figure 1).
5. Engage the “J” Hook Brackets (from the back) on the outer edge of the factory grille shell and line it up with the mounting holes on the Billet Grille. Insert the M4 x 50mm Phillips Machine Screws (from the front) through the Billet Grille holes and “J” Hook Brackets. Secure it with Lock Nuts included (Figure 2).
6. Once the Billet Grille is loosely attached, center Billet Grille and tighten all Phillips Screws at the same rate.
7. Make sure the Billet Grille is properly aligned and securely fastened, then reinstall the grille shell with original fasteners



Figure 1



Figure 2

8. Locate passenger side Billet Grille and position it onto side vent cavity to mark drilling location (Figure 3).
NOTE: Make sure Billet Grille is properly aligned before marking the drilling location.
9. Remove Billet Grille and set aside, carefully drill a 5/32” hole on the marked location.
10. Attach Billet Grille by holding the Metal Plate behind bumper and inserting Sheet Metal Screw (from the front) through the Billet Grille hole and Metal Plate (Figure 4). Tighten hardware at this time.
11. Repeat Steps 8-10 for opposite side.



Figure3

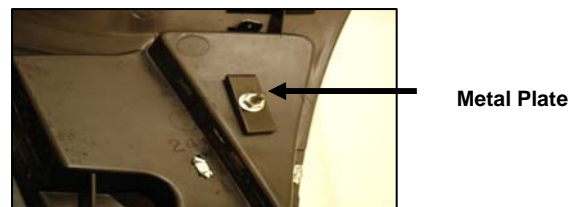


Figure 4

For Technical Support/Warranty Information please call 310-762-9944

Smittybilt, 1600 Walnut Parkway, Rancho Dominguez, CA 90220



Installation Instructions

*Easy Install Billet Grille (Part # 838023)
2005-On Toyota Tacoma*

CARE AND MAINTANCE INFORMATION

We recommend normal cleaning by using mild soap and water also applying a non-abrasive aluminum polish on a regular schedule. (Taking into consideration your climate and driving time and conditions.)

LIMITED WARRANTY

Smittybilt (The Company) warrants to the original purchaser of this product that should the product or any part thereof, under normal use and conditions, be proven defective in material or workmanship within the warranty period of 1 year from the date of purchase, such defect(s) will be repaired or replaced (At the Company's option) without charge for parts or labor. To obtain repair or replacement within the terms of the warranty, the product is to be delivered with proof of warranty coverage (e.g. dated bill of sale, receipt), specification of defect, freight pre-paid with Returns Good Authorization Number from Smittybilt to place of purchase. Items returned to Smittybilt Automotive without an Returns Authorization Number will be refused and returned to sender at the senders expense.

This warranty does not apply to any product or part thereof which, in the opinion of the Company, has suffered or been damaged through alteration, improper installation, mishandling, misuse, neglect accident or acts of nature. **THE EXTENT OF THE COMPANY'S LIABILITY UNDER THIS WARRANTY IS LIMITED TO THE REPAIR OR REPLACEMENT PROVIDED ABOVE AND, IN NO EVENT, SHALL THE COMPANY'S LIABILITY EXCEED THE PURCHASE PRICE PAID BY THE PURCHASER FOR THIS PRODUCT.**

This warranty is in lieu of all expressed warranties and liabilities. ANY IMPLIED WARRANTIES, INCLUDING ANY IMPLIED WARRANTY OF MERCHANTABILITY SHALL BE LIMITED TO THE DURATION OF THIS WRITTEN WARRANTY. ANY ACTION FOR BREACH OF ANY WARRANTY HEREUNDER INCLUDING ANY IMPLIED WARRANTY OF MERCHANTABILITY MUST BE BROUGHTH WITHIN A PERIOD OF 90 DAYS FROM DATE OF ORIGINAL PURCHASE. IN NO CASE SHALL THE COMPANY BE LIABLE FOR ANY CONSEQUENTIAL OR INCIDENTAL DAMAGES FOR BREACH OF THIS OR ANY OTHER WARRANTY, EXPRESSED OR IMPLIED, WHATSOEVER. No person or representative is authorized to assume for the company any liability other than expressed herein in connection with the sale of this product. Some states do not allow limitations on how long an implied warranty lasts or the exclusion or limitation of incidental or consequential damage, therefore above limitations may not apply to you. This warranty gives the purchaser specific legal rights. The purchaser may have additional rights, which vary from state to state.

Some states do not allow limitations on how long an implied warranty lasts or the exclusion or limitation of incidental or consequential damage, therefore above limitations may not apply to you. This warranty gives the purchaser specific legal rights. The purchaser may have additional rights, which vary from state to state.

For Technical Support/Warranty Information please call 310-762-9944

Smittybilt, 1600 Walnut Parkway, Rancho Dominguez, CA 90220