



WWW.SMITTYBILT.COM

**Installation Instructions**  
Gen 2 tire swing adjustment  
**Part#76857**  
**2007-2016 Wrangler JK**

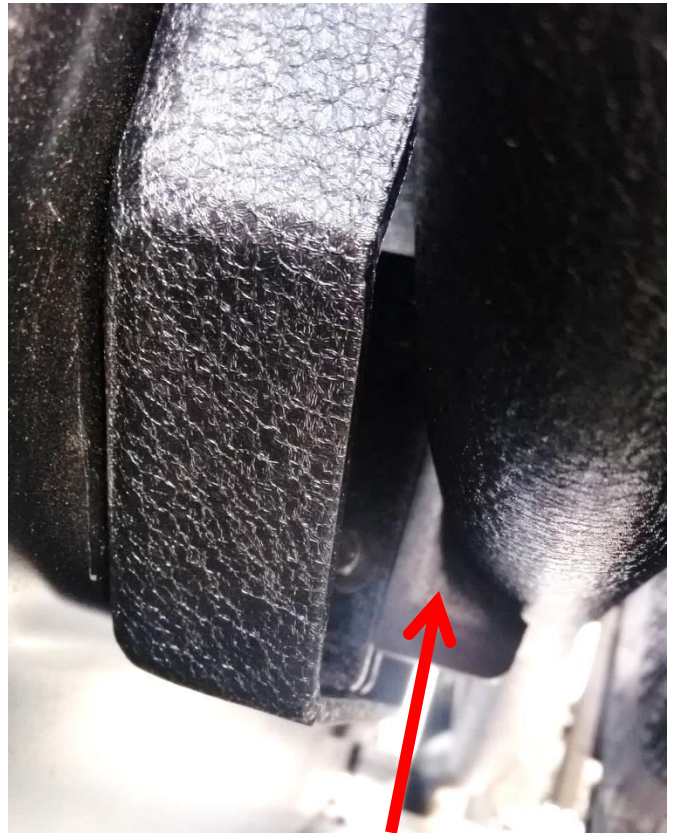
If tire swing is loose. Adjust turnbuckle.

1. Open tailgate about 1.5"-3"
2. Adjust turnbuckle to make swing arm sits completely inside saddle.
3. Close tailgate and check to make sure swing arm is fully seated in the saddle. A slight resistance when closing the last few inches is normal and desired.
4. Tighten jam nuts on turnbuckle.
5. Periodically check torque on all tire swing and bumper fasteners.

**Note:** It is recommended that you position your tire against the tire swing frame so that when you tighten the lug nuts it compresses the tire against the tire swing. This prevents the sidewall from flexing and creating a vibration.



Incorrect adjustment. Tire swing is not securely in the saddle when tailgate is closed.



Correct adjustment. No Gap. Tail gate has resistance when closing the last few inches.

**For Technical Support/Warranty Information please call 310-762-9944**  
Smittybilt, 400 W. Artesia Blvd Compton, CA 90220