



## Installation Instructions

SRC Bumper (Part # SB76724)

XRC Bumper (Part # SB76807)

2007-2014 Jeep JK 2 dr/4dr Front Bumper

**NOTE: Carefully read entire instructions thoroughly before attempting to install this part.**

SB76724 Parts Included	Qty	SB76807 Parts Included	Qty
93-312CA001 SRC Front Bumper	1	93-314DV002 XRC Front Bumper	1
93-314DV004 Aftermarket Light Mount	2	93-314DV004 Aftermarket Light Mount	2
90-314CA108 Lower Plate: Pass	1	90-314CA108 Lower Plate: Pass	1
90-314CA107 Lower Plate: Drvr	1	90-314CA107 Lower Plate: Drvr	1
90-314CA106 Lower Center Plate	1	90-314CA106 Lower Center Plate	1
90-314CA105 Outer Plate: Pass	1	90-314CA105 Outer Plate: Pass	1
90-314CA104 Outer Plate: Drvr	1	90-314CA104 Outer Plate: Drvr	1
90-314CA103 Inner Plate: Pass	1	90-314CA103 Inner Plate: Pass	1
90-314CA102 Inner Plate: Drvr	1	90-314CA102 Inner Plate: Drvr	1
90-314CA101 Center Plate	1	90-314CA101 Center Plate	1
5/16"-18 X 1 1/2" Button Head Bolt	2	5/16"-18 X 1 1/2" Button Head Bolt	2
5/16"-18 X 3/4" Flat Head Socket Cap Bolt	29	5/16"-18 X 3/4" Flat Head Socket Cap Bolt	29
5/16" SAE Washer	2	5/16" SAE Washer	2
5/16"-18 Hex Nut	27	5/16"-18 Hex Nut	27
1/4"-20 X 3/4" Hex Bolt	4	1/4"-20 X 3/4" Hex Bolt	4
1/4"-20 Nut	4	1/4"-20 Nut	4

### INSTALLATION:

**Step 1:** Unbolt and remove the factory front bumper and hardware from the vehicle. On certain models it may be necessary to remove the OE front plastic frame cover.

*NOTE: Be sure to unclip the factory fog light wiring harnesses if equipped*

**Step 2:** Remove the OE fog lights, OE plastic retaining clip, and OE hardware.

**Step 3:** Drill out the (2 per side), outer holes in the frame bumper mounting plates to 1/2". (Fig. A, B)

For Technical Support/Warranty Information please call 310-762-9944

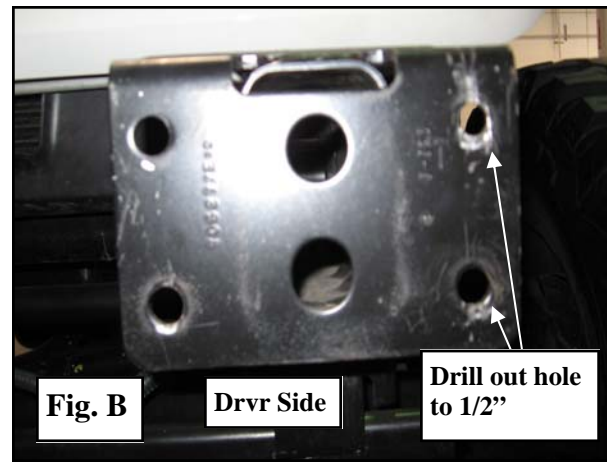
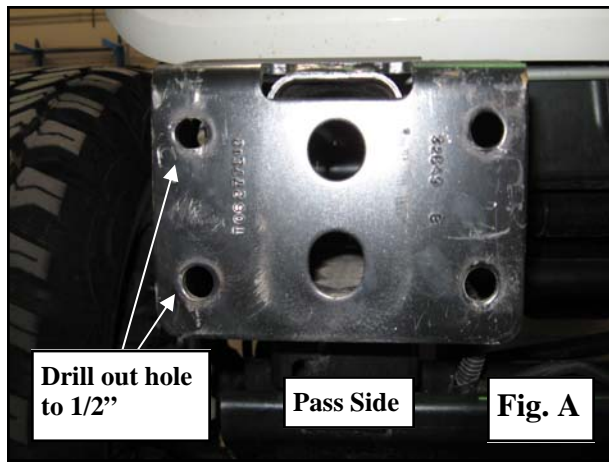


## Installation Instructions

*SRC Bumper (Part # SB76724)*

*XRC Bumper (Part # SB76807)*

*2007-2014 Jeep JK 2 dr/4dr Front Bumper*



**Step 4:** Install the OE fog lights into the front bumper (93-312CA001 SRC or 93-314DV004 XRC) front bumper using the previously removed OE plastic retaining clips. And hardware. (Fig. C)

**NOTE:** If installing aftermarket lights install the light mount bracket to the lower bumper light mounting holes using the (2 per side) supplied 1/4"-20 X 3/4" bolts and nuts.



**Step 5:** Install the drvr and passenger inner plates (90-314CA102 drvr and 90-314CA103 pass) to the new front bumper (93-312CA002 SRC or 93-314DV002 XRC) using the (4 per side) supplied 5/16" X 3/4" flat head socket cap bolts and nuts. (Fig. D)

**Step 6:** Install the drvr and passenger outer plates (90-314CA104 drvr and 90-314CA105 pass) to the new front bumper (93-312CA002 SRC or 93-314DV002 XRC) using the (3 per side) supplied 5/16" X 3/4" flat head socket cap bolts and nuts. (Fig. D)

**For Technical Support/Warranty Information please call 310-762-9944**



## Installation Instructions

SRC Bumper (Part # SB76724)

XRC Bumper (Part # SB76807)

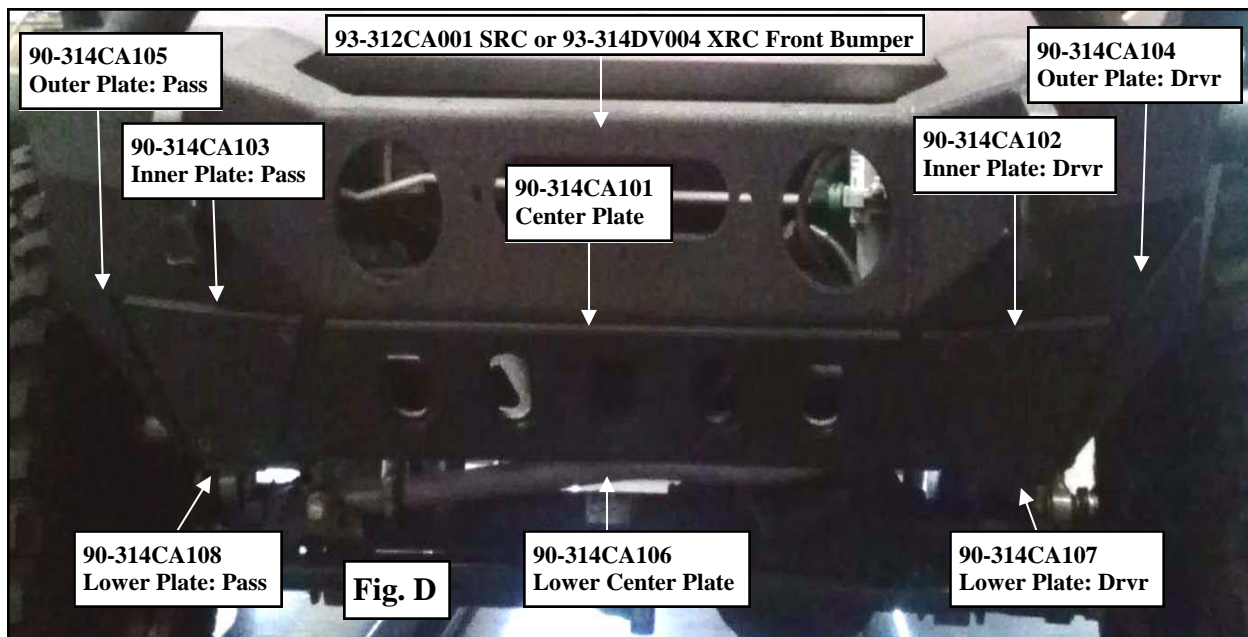
2007-2014 Jeep JK 2 dr/4dr Front Bumper

**Step 7:** Install the drvr and passenger lower plates (**90-314CA107 drvr** and **90-314CA108 pass**) to the new front bumper (**93-312CA002 SRC** or **93-314DV002 XRC**) using the (**3 per side**) supplied **5/16" X 3/4"** flat head socket cap bolts and nuts. (Fig. D)

**Step 8:** Install the lower center plate (**90-314CA106**) to the new front bumper (**93-312CA002 SRC** or **93-314DV002 XRC**) using the (**5**) supplied **5/16" X 3/4"** flat head socket cap bolts and nuts. (Fig. D)

**Step 9:** Install the center plate (**90-314CA101**) to the new front bumper (**93-312CA002 SRC** or **93-314DV002 XRC**) using the (**4**) supplied **5/16" X 3/4"** flat head socket cap bolts and nuts. (Fig. D)

**NOTE:** Do not install bolts in the (**2**) outer rear holes at this time.



**Step 10:** **NOTE:** This step might require 2 people. Raise the new front bumper (**93-312CA002 SRC** or **93-314DV002 XRC**) up into place and align the bumper mounting studs with (**4**) holes on the frame mounting plates. Secure using the previously removed **OE** hardware. (Fig D)

For Technical Support/Warranty Information please call 310-762-9944

Smittybilt, 400 W Artesia, Compton, CA 90220



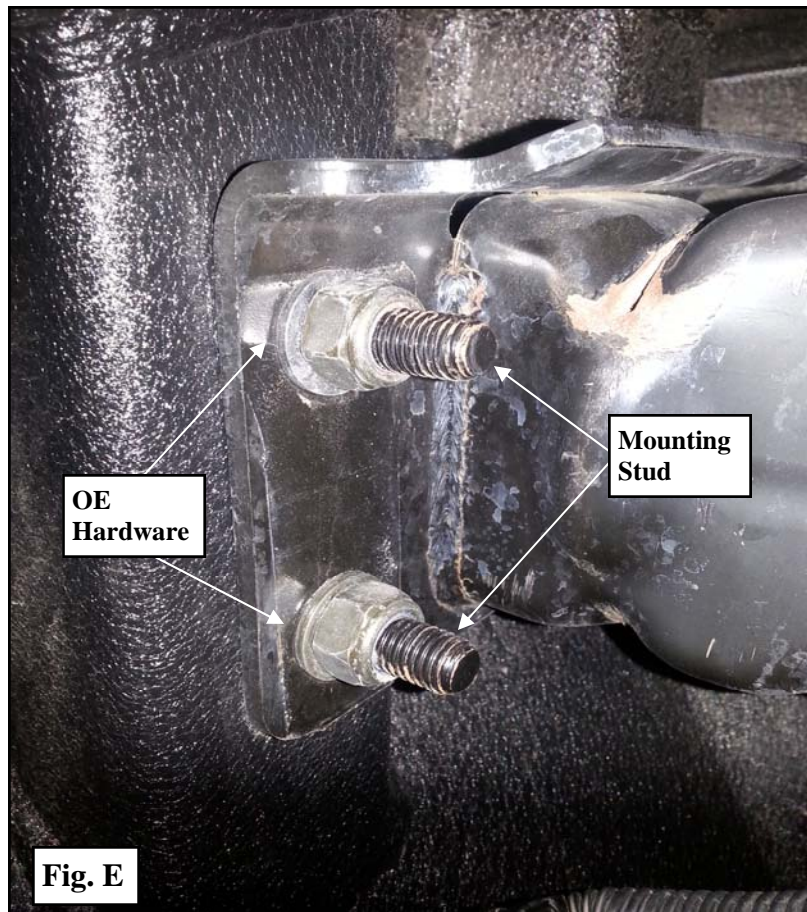


## Installation Instructions

SRC Bumper (Part # SB76724)

XRC Bumper (Part # SB76807)

2007-2014 Jeep JK 2 dr/4dr Front Bumper



**Step 11:** Level the bumper and torque the **OE** hardware to manufacturer's specifications. (Fig E)

**Step 12:** Using the (2) rear outer lower center plate mounting holes on the bottom of the front bumper as a guide, center punch and drill through factory crossmember using a 5/16" drill bit.

**NOTE:** Be careful not to damage the bumper while drilling.

**Step 13:** Install the supplied 5/16" X 1 1/2" button head bolts through the previously drilled (2) rear outer lower center plate mounting holes on the bottom of the front bumper and secure to frame crossmember using the supplied 5/16" washer and nut.

**Step 14:** Reconnect the fog light wiring harness.

**Step 15:** Installation is now complete. (Fig F)

For Technical Support/Warranty Information please call 310-762-9944

---

Smittybilt, 400 W Artesia, Compton, CA 90220



# Installation Instructions

SRC Bumper (Part # SB76724)

XRC Bumper (Part # SB76807)

2007-2014 Jeep JK 2 dr/4dr Front Bumper



Use this only as a guide for hardware without a called out torque specification in the instruction manual.

Bolt Torque and ID							
Decimal System				Metric System			
All Torques in Ft. Lbs. Maximums							
Bolt Size	Grade 5	Grade 8	Bolt Size	Class 9.8	Class 10.9	Class 12.9	
5/16	15	20	M6	5	9	12	
3/8	30	45	M8	18	23	27	
7/16	45	60	M10	32	45	50	
1/2	65	90	M12	55	75	90	
9/16	95	130	M14	85	120	145	
5/8	135	175	M16	130	165	210	
3/4	185	280	M18	170	240	290	

<p>1/2-13x1.75 HHCS                  D T L X</p>	<p>Grade 5 Grade 8                  (No. of Marks + 2)</p>	<p>M12-1.25x50 HHCS                  D T L X</p>
<p>G = Grade (Bolt Strength)                  D = Nominal Diameter (Inches)                  T = Thread Count (Threads per Inch)                  L = Length (Inches)                  X = Description (Hex Head Cap Screw)</p>		<p>P = Property Class (Bolt Strength)                  D = Nominal Diameter (Millimeters)                  T = Thread Pitch (Thread Width, mm)                  L = Length (Millimeters)                  X = Description (Hex Head Cap Screw)</p>

For Technical Support/Warranty Information please call 310-762-9944



## Installation Instructions

*SRC Bumper (Part # SB76724)*

*XRC Bumper (Part # SB76807)*

*2007-2014 Jeep JK 2 dr/4dr Front Bumper*

### Product cleaning and maintenance instructions

**Stainless Steel Finish** – Aluminum polish may be used to polish small scratches and scuffs on the finish. Mild soap, window or glass cleaner may be used to clean the finish. **Dual state powder coat finish** – Mild soap, window or glass cleaner may be used to clean the finish. In order to protect the finish, you may wax your product on a regular basis with pure carnauba automotive wax. Do not use any types of soap, polish or was that contains abrasive that could damage the finish. **Textured coated finishes** should be cleaned with a mild soap on a damp sponge. Do not apply polish or was that requires to be removed by means of buffing. This type of wax is commonly used at car wash facilities. **Chrome Finish** – Mild soap, window or glass cleaner may be used to clean the finish. In order to protect the finish you should wax your product on a regular basis with pure carnauba automotive wax. Do not use any types of soap, polish or was that contains abrasive that could damage the finish.

### Limited Warranties

Smittybilt's products are covered under the following limited warranties only. Note that the duration of the limited warranty differs according to the material and finish of the product purchased. Subject to the duration and conditions of the limited warranty stated below, Smittybilt warrants to the original retail purchaser that its products are free from defects in material and workmanship. All other warranties and representations express or implied, are hereby disclaimed, including fitness for merchantability and buyer's intended use or purpose. All parts are sold "AS IS" except for the limited warranties granted herein. Buyer assumes all risks as to the selection, suitability and performance of all goods and products selected. This limited warranty does not cover damage or impairment in any part due to misuse, improper installation, accident or contact with on-road or off-road hazards, product modification, improper or inadequate cleaning and/or maintenance. Smittybilt is not responsible for items damaged during shipping. This warranty is not transferable from the original buyer. For the original Buyer to be eligible for the limited warranty coverage, the Buyer must provide proof of purchase. Smittybilt strongly recommends returning the warranty registration card.

Customer's remedy hereunder shall be limited only to repair or replacement (at Smittybilt's option) of any defective part(s) returned to Smittybilt at customer's expense. The determination of whether or not a returned part is defective or subject to coverage under the limited warranties stated herein shall be made at Smittybilt's sole discretion.

To assure product quality, Smittybilt reserves the right to change product design, material, specification and finishes without prior notice to customers. This limited warranty gives you specific legal rights and you may also have other rights, which may vary from state to state. Some states do not allow limitations on how long an implied warranty lasts, so the above limitations may not apply as to you. Also, some states do not allow the exclusion or limitation of incidental or consequential damages, so the above limitations or exclusions may not apply to you. Smittybilt reserves the right to discontinue product lines and substitute products, or provide other remedies than those listed in this limited warranty for those discontinued products.

### Warning

Rollover and other types of vehicle accidents may result in serious injury or death to you, your passengers and others sharing the road. Smittybilt accessories are decorative and are not intended to reduce or avoid injury or damage in the event of an accident. The weight and location of Smittybilt accessories may affect your vehicles' handling, stability and performance, creating an increased risk of accident or rollover. Before installing any accessory, check state laws and assure that the accessory will not obscure any lights or interfere with proper operation on your vehicle's safety equipment. Consult your owner's manual and the Smittybilt instructions, or additional safety information. Smittybilt products, nor the warnings contained herein, are not a substitute for your safe driving. Don't drink and drive, always use seat belts and don't drive faster than conditions permit.

**For Technical Support/Warranty Information please call 310-762-9944**

---

**Smittybilt, 400 W Artesia, Compton, CA 90220**