

SMITTYBILT

NEWS

CLASS: SB7 ISSUE: 29 MONTH/YEAR: DEC. 2009 PRODUCT HIGHLIGHT: XRC3 3,000lbs. Comp. Series Winch



3,000^{lbs} UNIVERSAL WINCH SYSTEM

This powerful 3,000 lb winch has the biggest motor, fastest line speed and comes standard with more features and accessories than most winches in its class. It's a solid state-of-the-art machine that flat out hustles the competition.

3.9 Horse Power Motor with a 3-stage planetary gear system with a 136:1 gear ratio that delivers lightning fast line speed with or without load

THIS LITTLE POWERHOUSE COMES COMPLETE WITH:

- HANDLEBAR ROCKER SWITCH
- 11' REMOTE CONTROL
- HIGH PERFORMANCE SOLENOID & WIRE LOOM
- 4 WAY ROLLER FAIRLEAD
- UNIVERSAL MOUNTING PLATE.



HAND HELD REMOTE



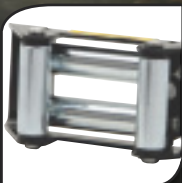
WINNCH PLATE



WINCH HOOK



HANDLE BAR REMOTE



FOUR WAY ROLLER



200 AMP SOLENOID

FEATURES:

Rated Line Pull:3000LBS (1360kgs) Single Line
 Winch Motor:Permanent Magnetic Motor
 12V with 3.9hp /2.9kw output
 Control:Remote Switch, 11.5' lead
 Gear train:3-Stage Planetary
 Gear Reduction Ratio: . .136:1
 Braking Action:Automatic in drum
 Drum Size:1.97" (50mm); L 2.95" (75mm)
 CableDia 5.5mm x 10m
 Fairlead:4-Way Roller Fairlead
 Remote Control:Included
 Battery:175CCA min. for winching
 Battery Leads:6mm² x 1.8m
 Finish:Black
 Weight17 lbs
 Overall Dimensions: . . .(LxWxH) 336mm x 114mm x 76.5mm
 Mounting Bolt Pattern: .4.9" x 3.0"

LINE SPEED AND AMP DRAW (FIRST LAYER)

Line Pull	lbs	No	1000	2000	3000
	kg	Load	454	907	1360
Line Speed	ft/min	24.5	14.7	10.5	6.9
	m/min	7.5	4.5	3.2	2.1
Motor	Amps	15	75	120	180

3000LBS LINE PULL AND CABLE CAPACITY

Layers of cable		1	2	3	4
Rated line pull	lbs	3000	2520	2090	1690
	kg	1360	1143	948	767
Cumulative cable capacity	ft	6.6	14.8	24.6	32
	m	2	4.5	7.5	10

PART#	DESCRIPTION	JOBBER
97203XRC3 3,000 lbs. Winch \$149.99



SMITTYBILT 400 West Artesia Blvd. • Compton, CA 90220
 Toll Free: 888-717-5797 • Phone: 310-762-9944 • Fax: 310-762-2297 • www.smittybilt.com